

DEPARTMENT OF THE ARMY TECHNICAL MANUAL

**OPERATOR'S, ORGANIZATIONAL, DIRECT SUPPORT, AND GENERAL
SUPPORT MAINTENANCE REPAIR PARTS AND SPECIAL
TOOLS LISTS (INCLUDING DEPOT MAINTENANCE
REPAIR PARTS AND SPECIAL TOOLS)**

**MAST AB-746/G
FSN 5895-954-3207**

**Headquarters, Department of the Army, Washington, D.C.
22 March 1974**

Current as of September 1973

	Paragraph	Page
SECTION I INTRODUCTION		
Scope	1-1	
General	1-2	
Explanation of columns	1-3	
Special information	1-4	
Location of repair parts	1-5	
Abbreviations (Not applicable)	1-6	
Reporting of equipment manual improvements	1-7	
II. BASIC ISSUE ITEMS LIST (Not, applicable)		
III. ITEMS TROOP INSTALLED OR AUTHORIZED LIST (Not applicable)		
IV. PRESCRIBED LOAD ALLOWANCE [Not applicable]		
V. REPAIR PARTS LISTS		6
VI. SPECIAL TOOLS, TEST AND SUPPORT EQUIPMENT (Not applicable)		
VII. REPAIR PARTS LIST		8
VIII. SPECIAL TOOLS, TEST AND SUPPORT EQUIPMENT (Not applicable)		
IX. INDEX - FEDERAL STOCK NUMBER AND REFERENCE NUMBER CROSS-REFERENCE TO FIGURE AND ITEM NUMBER		11

*This manual supersedes TM 11-5895-344-15P, 8 January 1965.

SECTION I

INTRODUCTION

1 - 1 . S c o p e

This manual lists basic issue items, items troop installed or authorized, repair parts, and special tools required by the crew/operator for operation and required for the performance of organizational, direct support, general support, and depot maintenance of the AB-746/G. The PCCN for the AB-746/G is GCRAKG for all models.

1 - 2 . G e n e r a l

This basic issue items, items troop installed or authorized, repair parts, and special tools list is divided into the following sections -

a. Basic Issue Items List - Section II. Not applicable.

b. Items Troop Installed or Authorized List - Section III. Not applicable.

c. Prescribed Load Allowance (PLA) -Section IV. Not applicable.

d. Repair Parts List - Section V. A list of repair parts authorized for the performance of maintenance at the organizational level. This repair parts list is arranged in alphabetical order.

e. Special Tools, Test and Support Equipment - Section VI. Not applicable.

f. Repair Parts List -Section VII. A list of repair parts authorized for the performance of maintenance at the direct support, general support, and depot level.

g. Special Tools, Test and Support Equipment - Section VIII. Not applicable.

h. Index - Federal Stock Number and Reference Number Cross-Reference to Figure and Item Number -Section IX. A list, in ascending numerical sequence, of all Federal stock numbers appearing in the listings, followed by a list, in alphameric sequence, of all reference numbers appearing in the listings. Federal stock number and reference numbers are cross-referenced to each illustration figure and item number or reference designation appearance.

1-3. Explanation of Columns

found in the tabular list.

a. Source, Maintenance, and Recoverability Codes (SMR).

(1) *Source code.* Indicates the manner of acquiring support items for maintenance, repair, or overhaul of end items. Source codes are —

Code	Explanation
P A -	Item procured and stocked for anticipated or known usage.
P B	Item procured and stocked for insurance purposes because essentiality dictates that a minimum quantity be available in the supply systems.
P C -	Item procured and stocked and which otherwise would be coded PA except that it is deteriorative in nature.
P D -	Support item, excluding support equipment, procured for initial issue or outfitting and stocked only for subsequent or additional initial issues or outfittings. Not subject to automatic replenishment.
P E -	Support equipment procured and stocked for initial issue or outfitting to specified maintenance repair activities.
P F -	Support equipment which will not be stocked but which will be centrally procured on demand.
P G -	Item procured and stocked to provide for sustained support for the life of the equipment. It is applied to an item peculiar to the equipment which because of probable discontinuance or shutdown of production facilities would prove uneconomical to reproduce at a later time.
KD —	An item of depot overhaul/repair kit and not purchased separately. Depot kit defined as a kit that provides items required at the time of overhaul or repair.
KF —	An item of a maintenance kit and not purchased separately. Maintenance kit defined as a kit that provides an item that can be replaced at organizational or direct support or general support levels of maintenance.
KB —	Item included in both a depot overhaul/repair kit and a maintenance kit.
MO —	Item to be manufactured or fabricated at organizational level.
MF —	Item to be manufactured or fabricated at direct support maintenance level.
	general support maintenance level.
MD —	Item to be manufactured or fabricated at depot maintenance level.
AO —	Item to be assembled at organizational level.
AF —	Item to be assembled at direct support maintenance level.

<i>Code</i>	<i>Explanation</i>
AH —	Item to be assembled at general support maintenance level.
AD —	Item to be assembled at depot maintenance level.
XA —	Item is not procured or stocked because the requirements for the item will result in the replacement of the next higher assembly.
XB —	Item is not procured or stocked. If not available through salvage, requisition.
XC —	Installation drawing, diagram instruction sheet, field service drawing, that is identified by manufacturers' part number.
XD —	Support items can be requisitioned with justification.

NOTE

Cannibalization or salvage may be used as a source of supply for any items source coded above except those coded XA and aircraft support items as restricted by AR 700-42

(2) Maintenance code. Maintenance codes are assigned to indicate the levels of maintenance authorized to USE and REPAIR support items. The maintenance codes are entered in the third and fourth positions of the Uniform SMR Code Format as follows —

(a) Use (third position). The maintenance code entered in the third position indicates the lowest maintenance level authorized to remove, replace, and use the support item. The maintenance code entered in the third position indicates one of the following levels of maintenance.

<i>Code</i>	<i>Application/Explanation</i>
O -	Support item is removed, replaced, used at the organizational level of maintenance.

NOTE

A code "C" may be used in this position to denote crew or operator maintenance performed within organizational maintenance.

F -	Support item is removed, replaced, used at the direct support maintenance level.
H -	Support item is removed, replaced, used at the general support maintenance.
D -	Support items that are removed, replaced, used at depot only.

(b) Repair (fourth position). The maintenance code entered in the fourth position indicates whether the item is to be repaired and identifies the lowest maintenance level with the capability to perform complete repair (i.e., all authorized maintenance functions). When a maintenance code is not used a dash (-) sign is entered. For multi-service

equipment/systems or when a code is entered, this position will contain one of the following maintenance codes as assigned by the service(s) that require the code —

<i>Code</i>	<i>Application/Explanation</i>
O —	The lowest maintenance level capable of complete repair of the support item is the organizational level.
F —	The lowest maintenance level capable of complete repair of the support item is direct support.
H -	The lowest maintenance level capable of complete repair of the support item is general support.
D -	The lowest maintenance level capable of complete repair of the support item is the depot level.
I -	Repair restricted to designated Specialized Repair Activity.
Z -	Non-repairable. No repair is authorized.
B -	No repair is authorized. The item may be reconditioned by adjusting, lubricating, etc., at the user level. No parts or special tools are procured for the maintenance of this item.

(3) Recoverability code. Recoverability codes are assigned to support items to indicate the disposition action on unserviceable items. The recoverability code is entered in the fifth position of the uniform SMR Code Format as follows -

<i>Code</i>	<i>Explanation</i>
Z -	Nonrepairable item. When unserviceable, condemn and dispose at the level indicated in the first digit of the maintenance code.
O -	Repairable item. When uneconomically repairable, condemn and dispose at organizational level.
F -	Repairable item. When uneconomically repairable, condemn and dispose at the direct support level.
H -	Repairable item. When uneconomically repairable, condemn and dispose at the general support level.
D -	Repairable item. When beyond lower level repair capability, return to depot. Condemnation and disposal not authorized below depot level.
L -	Repairable item. Repair, condemnation, and disposal not authorized below depot/Specialized Repair Activity level.
A -	Item requires special handling or condemnation procedures because of specific reasons (i.e., precious metal content, high dollar value, critical material or hazardous material).

b. Federal Stock Number. Indicates the Federal stock number assigned to the item and will be used for requisitioning purposes.

c. Description. Indicates the Federal item name and a minimum description required to identify the item. The last line indicates the reference number followed by the applicable Federal Supply Code for Manufacturer (FSCM) in parentheses. The FSCM is used as an element in item identification to designate manufacturer or distributor or Government agency, etc., and is identified in SB 708-42,

d. *Unit of Measure (U/M).* Indicates the standard or basic quantity by which the listed item is used in performing the actual maintenance function. This measure is expressed by a two-character alphabetical abbreviation, e.g., ea, in, pr, etc., and is the basis used to indicate quantities and allowances in subsequent columns. When the unit of measure differs from the unit of issue, the lowest unit of issue that will satisfy the required units of measure will be requisitioned.

e. *Quantity Furnished with Equipment (Basic Issue Items Only).* Not applicable.

f. *Quantity Authorized (Items Troop Installed or Authorized Only).* Not applicable.

g. *Quantity Incorporated in Unit.* This column indicates the quantity of the item used in the equipment. Subsequent appearances of the same item in the same assembly are indicated by the letters "REF".

h. 15-Day Organizational Maintenance Allowances.

(1) The repair parts indicated by an asterisk in the allowance column represent those authorized for use at the organizational category, and will be requisitioned on an "as required" basis, until stockage is based on demand in accordance with AR 710-2.

(2) Major Army commanders are authorized to approve reduction in the range of support items authorized for use in units within their commands. Recommendations for increase in range of items authorized for use will be forwarded to the Commander, US Army Electronics Command, ATTN: AMSEL-MA-CR, Fort Monmouth, NJ., 07703.

(3) Allowance quantities are indicated in the special tools list section for special tools, TMDE, and other support equipment.

i. 30-Day DS/GS Maintenance Allowances.

NOTE

Allowances in GS column are for GS maintenance only.

(1) The repair parts indicated by asterisk entries in separate allowance columns for DS and GS represent those authorized for use at that category of maintenance to be requisitioned on an "as required" basis, until stockage is based on demand in accordance with AR 710-2.

(2) Allowance quantities are indicated in the special tool lists section for special tools, TMDE, and other support equipment

j. *1-Year Allowances Per 100 Equipments/Contingency Planning Purposes.* Column intentionally left blank

k. *Depot Maintenance Allowance Per 100 Equipments.* This column indicates opposite the first appearance of each item the total quantity authorized for depot maintenance of 100 equipments.

l. *Illustration.* Not applicable.

1-4. Special Information

Usable on codes are included in column 3. Uncoded items are applicable to all models. Identification of the usable on codes used in this publication are - Code Used On

A

1-5. Location of Repair Parts

a. This manual contains one cross reference index (sec IX) to be used to locate a repair part when either the Federal stock number or reference number (manufacturer% part number) is known. The first column in the index is prepared in numerical or alphanumeric sequence in ascending order. The reference numbers (manufacturer's part numbers) are listed immediately following the last listed Federal stock number in the index of Federal stock numbers.

b. When the Federal stock number or reference number is known, follow the procedures given in (1) and (2) below.

(1) Refer to the index of Federal stock numbers (sec IX), and locate the Federal stock number or reference number. The FSN and reference number are cross-referenced to the applicable figure and item number or reference designation.

(2) Refer to the repair parts list (sec V and VII) and locate the figure number (col 7a - 20P, 10a - 34P) and item number or reference designation (col 7b - 20P, 10b - 34P) as noted in the FSN index.

c. When the figure and item number or reference designation are known, scrutinize columns 7a and 7b - 20P and 10a and 10b - 35P, of the repair parts

list (sec V and VII) until the item is located.

d. When the FSN, reference number, figure number, and item number are not known, scrutinize column 3 of the repair parts list (sec V and VII), which is arranged in alphabetical order.

1-6. Abbreviations

Not applicable.

1-7. Reporting of Equipment Manual Improvements

The reporting of errors, omissions, and recommenda-

tions for improving this publication by the individual user is encouraged. Reports should be submitted on DA Form 2028 (Recommended Changes to Publications and Blank Forms) and forwarded direct to Commander, US Army Electronics Command, ATTN: AMSEL-MA-CR, Fort Monmouth, NJ, 07703.

1-8. Items Comprising An Operable Equipment

Mast AB-746/G

FSN 5895-954-3207

SECTION V

TM11-5895-366-14P

(1) SME CODE	(2) FEDERAL STOCK NUMBER	(3) DESCRIPTION	(4) UNIT OF MEAS	(5) QTY INC IN UNIT	(6) 15-DAY ORGANIZATIONAL MAINTENANCE ALLOW				(7) ILLUSTRATION	
					(a) 1-5	(b) 6-20	(c) 21-50	(d) 51-100	(a) FIGURE NO	(b) STEP NO
					REFERENCE NUMBER & MFR CODE	USABLE ON CODE				
PAQZZ	5985-056-3851	MAST SUBASSEMBLY NO-REF-DESIG.....	FA	1	*	*	*	*		
		2546G1 (81902)								
PAQZZ	5985-056-3849	FRAME, SLEEVE NO-REF-DESIG ALUMINUM.....	F	6	*	*	*	*		
		2206Z1 (81902)								
PAQZZ	5935-056-3848	FRAME, SLEEVE NO-REF-DESIG ALUMINUM.....	EA	9	*	*	*	*		
		2206Z2 (81902)								
PAQZZ	5985-056-4847	GUIDE RING, LOWER NO-REF-DESIG NYLON 0.270 IN. THK. 0.625 IN W. 20.125 IN LG	FA	1	*	*	*	*		
		22189P1 (81902)								
PAQZZ	5985-056-3846	GUIDE RING, LOWER NO-REF-DESIG NYLON, 0.125 IN. THK. 0.625 IN W. 18.125 IN LG	EA	1	*	*	*	*		
		22189P2 (81902)								
PAQZZ	5985-056-3845	GUIDE RING, LOWER NO-REF-DESIG NYLON, 0.125... IN. THK. 0.625 IN W. 16.102 IN LG	FA	1	*	*	*	*		
		22189P3 (81902)								
PAQZZ	5985-056-3844	GUIDE RING, LOWER NO-REF-DESIG NYLON 0.125 IN. THK. 0.625 IN W. 14.125 IN LG	EA	1	*	*	*	*		
		22189P4 (81902)								
PAQZZ	5985-056-3843	GUIDE RING, LOWER NO-REF-DESIG NYLON 0.125 IN. THK. 0.625 IN W. 12.125 IN LG	EA	1	*	*	*	*		
		22189P5 (81902)								
PAQZZ	5985-056-3842	GUIDE RING, LOWER NO-REF-DESIG NYLON 0.125 IN. THK 0.625 IN W. 10.500 IN LG	EA	1	*	*	*	*		
		22189P6 (81902)								
PAQZZ	5985-056-3841	GUIDE RING, LOWER NO-REF-DESIG NYLON 0.125 IN. THK. 0.625 IN W. 8.937 IN. LG	EA	1	*	*	*	*		
		22189P7 (81902)								
PAQZZ	5985-056-3840	GUIDE RING, LOWER NO-REF-DESIG NYLON 0.125 IN. THK. 0.625 IN W. 7.375 IN LG	FA	1	*	*	*	*		
		2189P8 (81902)								
PAQZZ	5985-056-3868	GUIDE RING, UPPER NO-REF-DESIG TEFLON 0.760 IN THK. 5.739 IN ID, 6.348 IN OD.	FA	1	*	*	*	*		
		24943P1 (81902)								
PAQZZ	5985-056-3850	GUIDE RING, UPPER NO-REF-DESIG TEFLON 0.750... IN. THK. 5.114 IN ID, 5.718 IN OD.	EA	1	*	*	*	*		
		24943P2 (81902)								
PAQZZ	5985-056-3851	GUIDE RING, UPPER NO-REF-DESIG TEFLON 0.750... IN. THK. 4.401 IN. ID, 5.093 IN. OD.	EA	1	*	*	*	*		
		24943P3 (81902)								
PAQZZ	5985-056-3852	GUIDE RING, UPPER NO-REF-DESIG TEFLON 0.750... IN. THK. 3.866 IN. ID, 4.468 IN OD.	EA	1	*	*	*	*		
		24943P4 (81902)								
PAQZZ	5985-056-3853	GUIDE RING, UPPER NO-REF-DESIG TEFLON 0.750 IN THK. 3.346 IN ID, 3.843 IN. OD.	EA	1	*	*	*	*		
		24943P5 (81902)								
PAQZZ	5985-056-3855	GUIDE RING, UPPER NO-REF-DESIG TEFLON 0.750... IN. THK. 2.844 IN. ID 3.312 IN. OD.	EA	1	*	*	*	*		
		24943P6 (81902)								
PAQZZ	5985-056-3854	GUIDE RING, UPPER NO-REF-DESIG TEFLON 0.750... IN. THK. 2.346 IN. ID, 2.812 IN. OD.	EA	1	*	*	*	*		
		24943P7 (81902)								
PAQZZ	5985-056-3856	GUIDE RING, UPPER NO-REF-DESIG TEFLON 0.750... IN. THK. 6.364 IN. ID, 0.218 IN. OD.	EA	1	*	*	*	*		
		2043P8 (81902)								
PAQZZ	5305-052-8788	SCREW, SHOULDER NO-REF-DESIG STEEL 0.750 IN... DIA. 0.312 IN LG.	EA	1	*	*	*	*		
		22532P1 (81902)								
PAQZZ	5985-056-3839	SPRING, HELICAL, TORSION NO-REF-DESIG.....	EA	1	*	*	*	*		
		22462P1 (81902)								
PAQZZ	5985-056-3834	MAST SECTION, BASE NO-REF-DESIG.....	EA	1	*	*	*	*		
		22452G1 (81902)								
PAQZZ	5985-056-3835	MAST SECTION NO-REF-DESIG 6.332 IN DIA. BY 68. IN LG. SECTION NO. 1	EA	1	*	*	*	*		
		22458G1 (81902)								
PAQZZ	5985-056-3836	MAST SECTION NO-REF-DESIG 5.701 IN DIA. BY 68. IN LG. SECTION NO. 2	EA	1	*	*	*	*		
		24198P1 (81902)								
PAQZZ	5985-056-3831	MAST SECTION NO-REF-DESIG 5.082 IN. DIA. BY 68 IN. LG. SECTION NO. 3	EA	1	*	*	*	*		
		24199P1 (81902)								
PAQZZ	5985-056-3832	MAST SECTION NO-REF-DESIG 4.459 IN DIA. BY 69. IN LG SECTION NO. 4	FA	1	*	*	*	*		
		22309G1 (81902)								
PAQZZ	5985-056-3833	MAST SECTION NO-REF-DESIG 3.834 IN DIA. BY 68. IN LG SECTION NO. 5	EA	1	*	*	*	*		
		22054P1 (81902)								
PAQZZ	5985-056-9190	MAST SECTION NO-REF-DESIG 3.14 IN. DIA. BY 66. IN. LG. SECTION NO. 6	FA	1	*	*	*	*		
		22055P1 (81902)								

AME FORM 7

ORGANIZATION: HELICOPTER...

SECTION V

TM11-5895-344-14P

(1) SMB CODE	(2) FEDERAL STOCK NUMBER	(3) DESCRIPTION REFERENCE NUMBER & MFR CODE	(4) UNIT OF MEAS	(5) QTY. INC IN UNIT	(6) 15-DAY ORGANIZATIONAL MAINTENANCE ALLOW				(7) ILLUSTRATION	
					(a)	(b)	(c)	(d)	(a)	(b)
					1-5	6-20	21-50	51-100	FIGURE NO.	ITEM NO.
PAQZZ	5985-064-9191	MAST SECTION NO-REF-DESIG 2.812 IN. DIA. BY 60 IN. LG SECTION NO. 7 22056P1 (81902)	EA	1	*	*	*	*		
PAQZZ	5985-056-3837	MAST SECTION NO-REF-DESIG 2.314 IN. DIA. BY 60 IN. LG. SECTION NO. 8 22057P1 (81902)	EA	1	*	*	*	*		
PAQZZ	5985-056-2554	FRAME SHEAVE, L M NO-REF-DESIG ALUMINUM..... 25914P1 (81902)	EA	1	*	*	*	*		
PAQZZ	5985-056-2722	FRAME SHEAVE, RM NO-REF-DESIG ALUMINUM..... 25916P2 (81902)	EA	1	*	*	*	*		
PAQZZ	3020-053-1755	PULLEY, GROOVE NO-REF-DESIG..... 25906G1 (81902)	EA	1	*	*	*	*		
PAQZZ	3020-056-2665	PULLEY, GROOVE NO-REF-DESIG..... 25907G1 (81902)	EA	1	*	*	*	*		
PAQZZ	5305-053-1753	SCREW, EXTERNALLY RELIEVED NO-REF-DESIG..... 25979P1 (81902)	EA	6	*	*	*	*		
PAQZZ	5305-056-8794	SCREW, EXTERNALLY RELIEVED NO-REF-DESIG..... 25979P2 (81902)	EA	10	*	*	*	*		
PAQZZ	5985-066-2723	MAST BASE SUBASSEMBLY NO-REF-DESIG..... 22101P1 (81902)	EA	1	*	*	*	*		
PAQZZ	5310-889-2680	NUT, PLAIN, ROUND NO-REF-DESIG 1.0 IN. OD..... 0.500 IN THK, 0.484 IN ACROSS FLATS 22122P1 (81902)	EA	3	*	*	*	*		
PAQZZ	5340-985-6522	PIN, QUICK RELEASE NO-REF-DESIG..... 0LDS4-9 (84250)	EA	3	*	*	*	*		
PAQZZ	5985-066-2731	LEG, BASE NO-REF-DESIG..... 22443G1 (81902)	EA	3	*	*	*	*		
PAQZZ	5985-053-1773	GUY NO-REF-DESIG 5/16 IN SHACKLE W/SCREW PIN 1 3/8 X 6 HOOK AND EYE TURNBUCKLE 1 22186G1 (81902)	EA	3	*	*	*	*		
PAQZZ	5340-291-8224	TURNBUCKLE NO-REF-DESIG..... 3903-846 (79577)	EA	1	*	*	*	*		
PAQZZ	5985-053-1770	GUY NO-REF-DESIG 5/16 IN SHACKLE W/SCREW PIN 1 3/8 X 6 HOOK AND EYE TURNBUCKLE 1 22187G2 (81902)	EA	1	*	*	*	*		
PAQZZ	3950-066-2690	METAINER, MOIST NO-REF-DESIG..... 24071G1 (81902)	EA	1	*	*	*	*		
PAQZZ	3950-857-0354	MOIST, WIRE ROPE NO-REF-DESIG..... T15 (12700)	EA	1	*	*	*	*		
PAQZZ	5995-953-4935	HANDLE, MOIST NO-REF-DESIG 1.250 IN. DIA..... L135ED 18.500 IN. LG, EXTEND 28.250 IN. LG. 159 (12700)	EA	1	*	*	*	*		
PAQZZ	4030-066-7236	ROD, ARM ASSY NO-REF-DESIG..... 22102G1 (81902)	EA	3	*	*	*	*		
PAQZZ	4030-066-2747	ANCHOR, GUY NO-REF-DESIG..... 18185G1 (81902)	EA	3	*	*	*	*		
PAQZZ	4030-066-2748	DRIVE ROD NJ-REF-DESIG..... 18185P1 (81902)	EA	1	*	*	*	*		
PAQZZ	5985-066-7232	CAP, MAST NO-REF-DESIG..... 24305G1 (81902)	EA	1	*	*	*	*		
PAQZZ	4030-066-7235	WHEEL, GUY NO-REF-DESIG..... 16844G1 (81902)	EA	3	*	*	*	*		
PAQZZ	4030-066-2740	GUY LOCATING CABLE NO-REF-DESIG..... 22448G1 (81902)	EA	1	*	*	*	*		

SECTION VII

TM11-5895-344-14P

(1) SAR CODE	(2) FEDERAL STGC NUMBER	(3) DESCRIPTION REFERENCE NUMBER & MFR. CODE USABLE ON COL:	(4) UNIT OF MEAS	(5) QTY INC IN UNIT	(6) 30-DAY GS MAINT ALLOWANCE			(7) 30-DAY GS MAINT ALLOWANCE			(8) 1-YR ALW PER 100 EQUIP CNTGCT	(9) DEPOT MAINT ALW PER 100 EQUIP	(10) ILLUSTRATION	
					(a)	(b)	(c)	(a)	(b)	(c)			(a)	(b)
					1-20	21-50	51-100	1-20	21-50	51-100			FIGURE NO.	ITEM NO.
PAOZZ	5985-056-3857	MAST SUBASSEMBLY NO-REF-DESIG.....	EA	1	*	*	*	*	*	*		3		
PAOZZ	5985-056-3849	2396-1 (81902) FRAME, SHEAVE NO-REF-DESIG ALUMINUM.....	EA	6	*	*	*	*	*	*		2		
PAOZZ	5985-056-3848	22642G1 (81902) FRAME, SHEAVE NO-REF-DESIG ALUMINUM.....	EA	9	*	*	*	*	*	*		2		
PAOZZ	5985-056-3867	22042G2 (81902) GUIDE RING, LOWER NO-REF-DESIG NYLON....	EA	1	*	*	*	*	*	*		3		
PAOZZ	5985-056-3846	22189P1 (81902) GUIDE RING, LOWER NO-REF-DESIG NYLON....	EA	1	*	*	*	*	*	*		3		
PAOZZ	5985-056-3845	22189P2 (81902) GUIDE RING, LOWER NO-REF-DESIG NYLON....	EA	1	*	*	*	*	*	*		3		
PAOZZ	5985-056-3844	22189P3 (81902) GUIDE RING, LOWER NO-REF-DESIG NYLON....	EA	1	*	*	*	*	*	*		3		
PAOZZ	5985-056-3843	22189P4 (81902) GUIDE RING, LOWER NO-REF-DESIG NYLON....	EA	1	*	*	*	*	*	*		3		
PAOZZ	5985-056-3842	22189P5 (81902) GUIDE RING, LOWER NO-REF-DESIG NYLON....	EA	1	*	*	*	*	*	*		3		
PAOZZ	5985-056-3841	22189P6 (81902) GUIDE RING, LOWER NO-REF-DESIG NYLON....	EA	1	*	*	*	*	*	*		3		
PAOZZ	5985-056-3840	22189P7 (81902) GUIDE RING, LOWER NO-REF-DESIG NYLON....	EA	1	*	*	*	*	*	*		3		
PAOZZ	5985-056-3838	2189P8 (81902) GUIDE RING, UPPER NO-REF-DESIG TEFLON...	EA	1	*	*	*	*	*	*		3		
PAOZZ	5985-056-3850	24943P1 (81902) GUIDE RING, UPPER NO-REF-DESIG TEFLON...	EA	1	*	*	*	*	*	*		3		
PAOZZ	5985-056-3851	24943P2 (81902) GUIDE RING, UPPER NO-REF-DESIG TEFLON...	EA	1	*	*	*	*	*	*		3		
PAOZZ	5985-056-3852	24943P3 (81902) GUIDE RING, UPPER NO-REF-DESIG TEFLON...	EA	1	*	*	*	*	*	*		3		
PAOZZ	5985-056-3853	24943P4 (81902) GUIDE RING, UPPER NO-REF-DESIG TEFLON...	EA	1	*	*	*	*	*	*		3		
PAOZZ	5985-056-3855	24943P5 (81902) GUIDE RING, UPPER NO-REF-DESIG TEFLON...	EA	1	*	*	*	*	*	*		3		
PAOZZ	5985-056-3854	24943P6 (81902) GUIDE RING, UPPER NO-REF-DESIG TEFLON...	EA	1	*	*	*	*	*	*		3		
PAOZZ		24943P7 (81902) GUIDE RING, UPPER NO-REF-DESIG TEFLON...	EA	1	*	*	*	*	*	*		3		

CJNTINUED

SECTION VII

TM11-5895-344-14P

(1) SMB CODE	(2) FEDERAL STOCK NUMBER	(3) DESCRIPTION REFERENCE NUMBER & MFR. CODE USABLE ON CODE		(4) UNIT OF MEAS	(5) QTY INC IN UNIT	(6) 30-DAY GS MAINT ALLOWANCE			(7) 30-DAY GS MAINT ALLOWANCE			(8) 1-YR ALW PER 100 EQUIP CHTGCT	(9) DEPOT MAINT ALW PER 100 EQUIP	(10) ILLUSTRATION				
						(a)	(b)	(c)	(a)	(b)	(c)			(a)	(b)			
						1-20	21-50	51-100	1-20	21-50	51-100			FIGURE NO.	ITEM NO.			
			CONTINUED															
PAOZZ	5305-052-8766		0.750 IN. THK, 0.364 IN. ID, C.218 IN. OD. 3043PB (81902) SCREW, SHOULDER NO-REF-DESIG STEEL 0.750 IN. DIA. 0.312 IN LG. 22532P1 (81902)	EA	1	*	*	*	*	*	*			5				
PAOZZ	5985-056-3839		22462P1 (81902) SPRING, HELICAL, TORSION NO-REF-DESIG....	EA	1	*	*	*	*	*	*			2				
PAOZZ	5985-056-3834		22452G1 (81902) MAST SECTION, BASE NO-REF-DESIG.....	EA	1	*	*	*	*	*	*			3				
PAOZZ	5985-056-3835		22452G1 (81902) MAST SECTION NO-REF-DESIG 6.332 IN DIA.. BY 68 IN LG. SECTION NO. 1	EA	1	*	*	*	*	*	*			3				
PAOZZ	5985-056-3836		22450G1 (81902) MAST SECTION NO-REF-DESIG 5.701 IN DIA.. BY 68 IN LG. SECTION NO. 2	EA	1	*	*	*	*	*	*			3				
PAOZZ	5985-056-3831		24198P1 (81902) MAST SECTION NO-REF-DESIG 5.002 IN. DIA.. BY 68 IN. LG. SECTION NO. 3	EA	1	*	*	*	*	*	*			3				
PAOZZ	5985-056-3832		24199P1 (81902) MAST SECTION NO-REF-DESIG 4.459 IN DIA.. BY 69 IN LG SECTION NO. 4	EA	1	*	*	*	*	*	*			3				
PAOZZ	5985-056-3833		22309G1 (81902) MAST SECTION NO-REF-DESIG 3.834 IN DIA.. BY 68 IN LG SECTION NO. 5	EA	1	*	*	*	*	*	*			3				
PAOZZ	5985-056-9190		22094P1 (81902) MAST SECTION NO-REF-DESIG 3.14 IN. DIA.. BY 68 IN. LG. SECTION NO. 6	EA	1	*	*	*	*	*	*			3				
PAOZZ	5985-064-9191		22055P1 (81902) MAST SECTION NO-REF-DESIG 2.812 IN. DIA.. BY 68 IN. LG SECTION NO. 7	EA	1	*	*	*	*	*	*			3				
PAOZZ	5985-056-3837		22056P1 (81902) MAST SECTION NO-REF-DESIG 2.314 IN. DIA.. BY 68 IN. LG. SECTION NO. 8	EA	1	*	*	*	*	*	*			3				
PAOZZ	5985-066-2554		22057P1 (81902) FRAME SHEAVE, L M NO-REF-DESIG ALUMINUM. 25914P1 (81902)	EA	1	*	*	*	*	*	*			2				
PAOZZ	5985-066-2722		25914P2 (81902) FRAME SHEAVE, RM NO-REF-DESIG ALUMINUM.. 25914P2 (81902)	EA	1	*	*	*	*	*	*			2				
PAOZZ	3020-053-1755		25906G1 (81902) PULLEY, GROOVE NO-REF-DESIG.....	EA	1	*	*	*	*	*	*			5				
PAOZZ	3020-066-2665		25907G1 (81902) PULLEY, GROOVE NO-REF-DESIG.....	EA	1	*	*	*	*	*	*			5				
PAOZZ	5305-053-1753		25979P1 (81902) SCREW, EXTERNALLY RELIEVED NO-REF-DESIG.. 25979P1 (81902)	EA	6	*	*	*	*	*	*			5				
PAOZZ	5305-056-8794		25979P2 (81902) SCREW, EXTERNALLY RELIEVED NO-REF-DESIG.. 25979P2 (81902)	EA	10	*	*	*	*	*	*			5				
PAOZZ	5985-066-2723		2230191 (81902) MAST BASE SUBASSEMBLY NO-REF-DESIG.....	EA	1	*	*	*	*	*	*			3				
PAOZZ	5310-889-2680		22122P1 (81902) NUT, PLAIN, ROUND NO-REF-DESIG 1.0 IN... OD 0.500 IN THK. 0.484 W ACROSS FLATS	EA	3	*	*	*	*	*	*			3				
PAOZZ	5340-985-6522		22122P1 (81902) PIN, QUICK RELEASE NO-REF-DESIG..... BL054-9 (84256)	EA	3	*	*	*	*	*	*			5				

SECTION VII

TM11-5895-344-14P

SRR CODE	FEDERAL STOCK NUMBER	DESCRIPTION REFERENCE NUMBER & MFR. CODE USABLE ON CODE	UNIT OF MEAS	QTY INC IN UNIT	30-DAY DS MAINT ALLOWANCE			30-DAY GS MAINT ALLOWANCE			1-YR ALW PER 100 EQUIP CNTGCT	D/POT MAINT ALW PER 100 EQUIP	ILLUSTRATION	
					(a)	(b)	(c)	(a)	(b)	(c)			(a)	(b)
					1-20	21-50	51-100	1-20	21-50	51-100			FIGURE NO.	ITEM NO.
PAOZZ	5985-066-2731	LEG, BASE NO-REF-DESIG..... 22443G1 (01902)	EA	3	*	*	*	*	*	*		5		
PAOZZ	5935-053-1773	GUY NO-REF-DESIG 5/16 IN SHACKLE W/SCREW PIN 1 3/8 X 6 HOOK AND EYE TURNBUCKLE 1 22106G1 (01902)	EA	3	*	*	*	*	*	*		5		
PAOZZ	5368-291-8224	TURNBUCKLE NO-REF-DESIG..... 3903-0X6 (79577)	EA	2	*	*	*	*	*	*		5		
PAOZZ	5385-053-1770	GUY NO-REF-DESIG 5/16 IN SHACKLE W/SCREW PIN 1 3/8 X 6 HOOK AND EYE TURNBUCKLE 1 22107G2 (01902)	EA	1	*	*	*	*	*	*		5		
PAOZZ	3950-866-2698	RETAINER, MOIST NO-REF-DESIG..... 24071G1 (01902)	EA	1	*	*	*	*	*	*		2		
PAOZZ	3950-857-0354	MOIST, WIRE ROPE NO-REF-DESIG..... T15 (12700)	EA	2	*	*	*	*	*	*		3		
PAOZZ	5895-953-4935	HANDLE, MOIST NO-REF-DESIG 1.250 IN..... DIA. CLOSED 10.500 IN. LG. EXTEND 20.250 IN. LG. 158 (12700)	EA	1	*	*	*	*	*	*		3		
PAOZZ	4030-066-7236	ROD, ARM ASSY NO-REF-DESIG..... 22202G1 (01902)	EA	3	*	*	*	*	*	*		3		
PAOZZ	5030-066-2747	ANCHOR, GUY NO-REF-DESIG..... 10105G1 (01902)	EA	3	*	*	*	*	*	*		5		
PAOZZ	4030-066-2748	DRIVE ROD NO-REF-DESIG..... 10105P1 (01902)	EA	1	*	*	*	*	*	*		5		
PAOZZ	5985-066-7232	CAP, HAST NO-REF-DESIG..... 24505G1 (01902)	EA	1	*	*	*	*	*	*		3		
PAOZZ	4030-066-7235	REEL, GUY NO-REF-DESIG..... 16044G1 (01902)	EA	3	*	*	*	*	*	*		5		
PAOZZ	4030-066-2740	GUY LOCATING CABLE NO-REF-DESIG..... 22448G1 (01902)	EA	1	*	*	*	*	*	*		5		

SECTION IX

TM11-5895-344-14P

INDEX - FEDERAL STOCK NUMBER AND REFERENCE NUMBER
 CROSS-REFERENCE TO FIGURE AND ITEM NUMBER

STOCK NUMBER	FIGURE NO.	ITEM NO.	STOCK NUMBER	FIGURE NO.	ITEM NO.
3140-056-1793			5985-056-3839		
3020-066-2665			5985-056-3840		
3050-066-2690			5985-056-3841		
3050-066-0256			5985-056-3842		
4030-066-2740			5985-056-3843		
4030-066-2742			5985-056-3844		
4030-066-2744			5985-056-3845		
4030-066-7236			5985-056-3846		
4030-066-7236			5985-056-3847		
5305-056-4700			5985-056-3848		
5305-056-1752			5985-056-3849		
5305-056-1790			5985-056-3850		
5310-066-2680			5985-056-3851		
5300-091-2226			5985-056-3852		
5300-056-4522			5985-056-3853		
5095-056-4935			5985-056-3854		
5095-056-1770			5985-056-3855		
5095-056-1773			5985-056-3856		
5095-056-3031			5985-056-3857		
5095-056-3832			5985-056-9193		
5095-056-3833			5985-066-9191		
5095-056-3834			5985-066-2554		
5095-056-3835			5985-066-2722		
5095-056-3836			5985-066-2723		
5095-056-3837			5985-066-2731		
5095-056-3838			5985-066-7232		

REFERENCE NO.	MFR CODE	FIG. NO.	ITEM NO.	REFERENCE NO.	MFR CODE	FIG. NO.	ITEM NO.
86054-9	84256			2230901			81902
713	12779			2244301			81902
158	12700			2244801			81902
1684461	81522			2245201			81902
1818501	81902			2245801			81902
1310501	81902			2246201			81902
204308	81902			2253201			81902
218908	81902			2407101			81902
2205401	81902			2419801			81902
2205501	81902			2419901			81902
22090-1	81902			2450501			81902
2209701	81902			2494301			81902
2206201	81902			2494302			81902
2206202	81902			2494303			81902
2212201	81902			2494304			81902
2218601	81902			2494305			81902
2218702	81902			2494306			81902
2218701	81902			2494307			81902
2218902	81902			2590601			81902
2218903	81902			2590701			81902
2218904	81902			2591401			81902
2218905	81902			2591402			81902
2218906	81902			2596901			81902
2218907	81902			2597901			81902
2230191	81902			2597902			81902
2230201	81902			3903-8X6			79577

By Order of the Secretary of the Army:

CREIGHTON W. ABRAMS
General, United States Army
Chief of Staff

Official:

VERNE L. DOWERS
Major General, United States Army
The Adjutant General

Distribution:

Action Army:

CNEB (1)
TSG (1)
ACSC-E (2)
USAME (10)
USAARENEB (1)
USASA (2)
TRADOC (2)
AMC (1)
NICOM (1)
TRCOM (2)
ARADCO-f (2)
ARADCOM Hqs (1)
CG Maj Comd (2)
USACDCEC (10)
USACC (2)
NISA (ECOM) (10)
Armies (1)
USASISS (2)
Sve Colleges (1)

Fort Hanchman (2)
WEMR (1)
Fort Carson (2)
USAERDAA (1)
USAERDAW (1)
Army Dep (1), except
LEAD (10)
SAAD (10)
TOAD (14)
ATAD (10)
USA Dep (1)
Sig Sec USA Dep (2)
Sig Dep (2)
Sig FLDMS (1)
Ft Richardson (ECOM Ofc) (2)
Units org under fol TOE (1 ea):
11-85
29-134
29-136

NG: None.

USAR: None.

For explanation of abbreviations used, see AR 310-50.

END

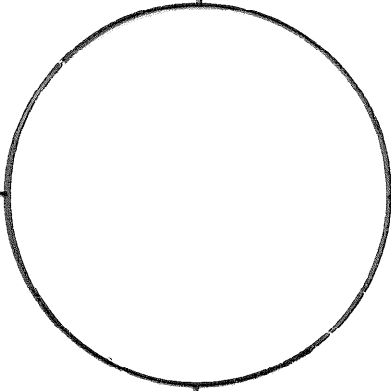
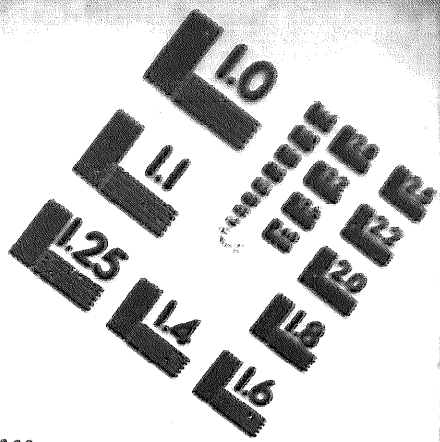
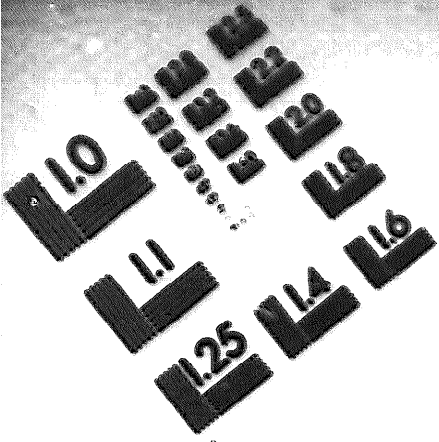
12-03-82

DATE





INSTRON
TEST TARGET



150 MM

1.0 mm (ø= 31 mm)

ABCDEFGHIJKLMN OPQRSTUVWXYZ
abcdefghijklmnopqrstuvwxyz 0123456789 \$%&'()*+,-./:;<=>?@

1.5 mm (ø= 1.09 mm)

ABCDEFGHIJKLMN OPQRSTUVWXYZ
abcdefghijklmnopqrstuvwxyz 0123456789 \$%&'()*+,-./:;<=>?@

2.0 mm (ø= 1.37 mm)

ABCDEFGHIJKLMN OPQRSTUVWXYZ
abcdefghijklmnopqrstuvwxyz
1234567890 \$%&'()*+,-./:;<=>?@

2.5 mm (ø= 1.77 mm)

ABCDEFGHIJKLMN OPQRSTUVWXYZ
abcdefghijklmnopqrstuvwxyz
1234567890 \$%&'()*+,-./:;<=>?@

1.0 mm (ø= 31 mm)

ABCDEFGHIJKLMN OPQRSTUVWXYZ
abcdefghijklmnopqrstuvwxyz 0123456789 \$%&'()*+,-./:;<=>?@

1.5 mm (ø= 1.09 mm)

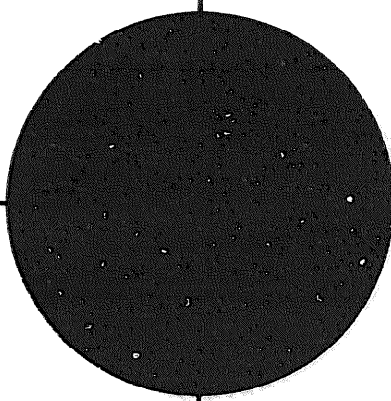
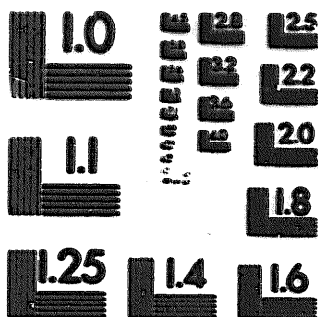
ABCDEFGHIJKLMN OPQRSTUVWXYZ
abcdefghijklmnopqrstuvwxyz 0123456789 \$%&'()*+,-./:;<=>?@

2.0 mm (ø= 1.37 mm)

ABCDEFGHIJKLMN OPQRSTUVWXYZ
abcdefghijklmnopqrstuvwxyz
1234567890 \$%&'()*+,-./:;<=>?@

2.5 mm (ø= 1.77 mm)

ABCDEFGHIJKLMN OPQRSTUVWXYZ
abcdefghijklmnopqrstuvwxyz
1234567890 \$%&'()*+,-./:;<=>?@



200 MM

250 MM

